

TITANUS SUPER-SENS®

High-Sensitive
Air Sampling
Smoke Detection System



TITANUS SUPER-SENS®

Innovative Air Sampling System

- unmatched high detection sensitivity with patented detection process
 - **0.0025 % /m**
 - adjustable sensitivity
- No software amplification, achieving better signal quality (low background noise)
- excellent detection behaviour for all types of fires and fire media
- long service life
- long maintenance intervals

TITANUS SUPER-SENS®

Innovative Air Sampling Smoke Detection System

- safety against false alarms even at high sensitivities
 - high signal distance
 - background noise / wanted signal
- simple and quick commissioning
- automatic air flow adjustment
- belongs to a device family
 - for each application the optimum device

TITANUS *SUPER-SENS*[®]

Key Features

- infrared LED-interface for quick data transmission to a diagnostic device
- sensible air flow control with temperature compensation
- interface for the connection of a chart recorder enables long time recording of the smoke level and fault signals
- history memory

TITANUS *SUPER-SENS*[®]

Key Features

- remote-switching of sensitivity level (day/night)
- three potential-free contacts for alert, action and fire alarm
- Toolbox for identical accessories as the whole device family
- option for network solution

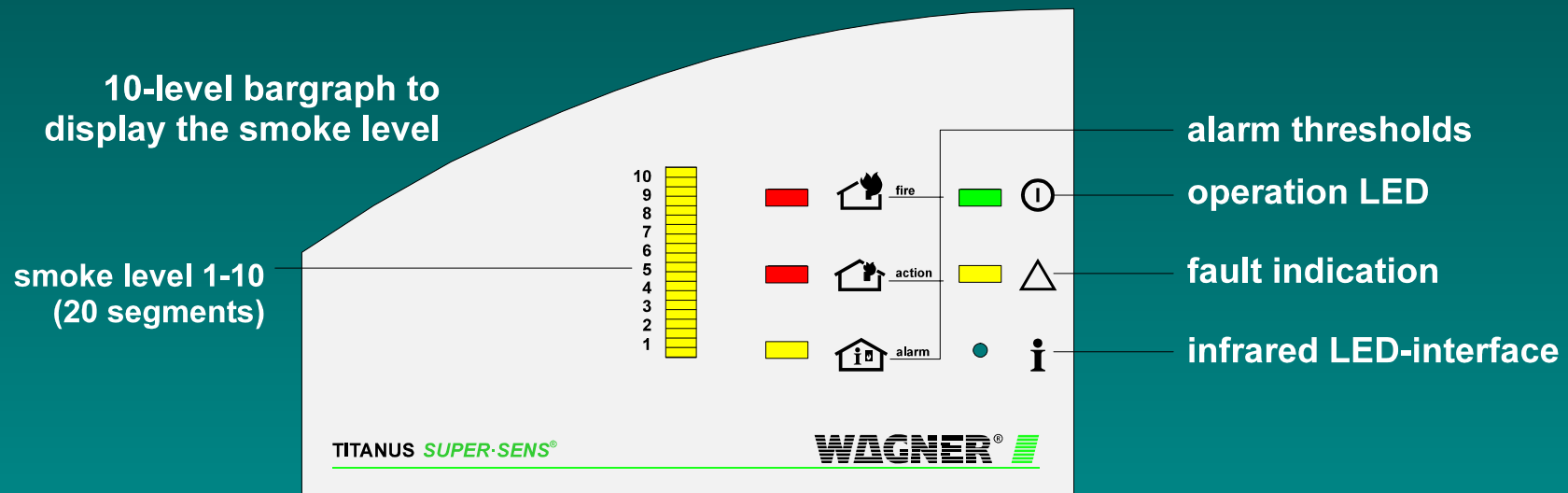
TITANUS SUPER-SENS®

Field of Application

- **for rooms with high value concentration**
 - EDP-rooms
 - telecommunication
- **clean rooms with high air flows**
 - wafer chip production
 - laboratories
- **high ceilings and halls**
- **airconditioned rooms**
- **rooms with laminar airflow**

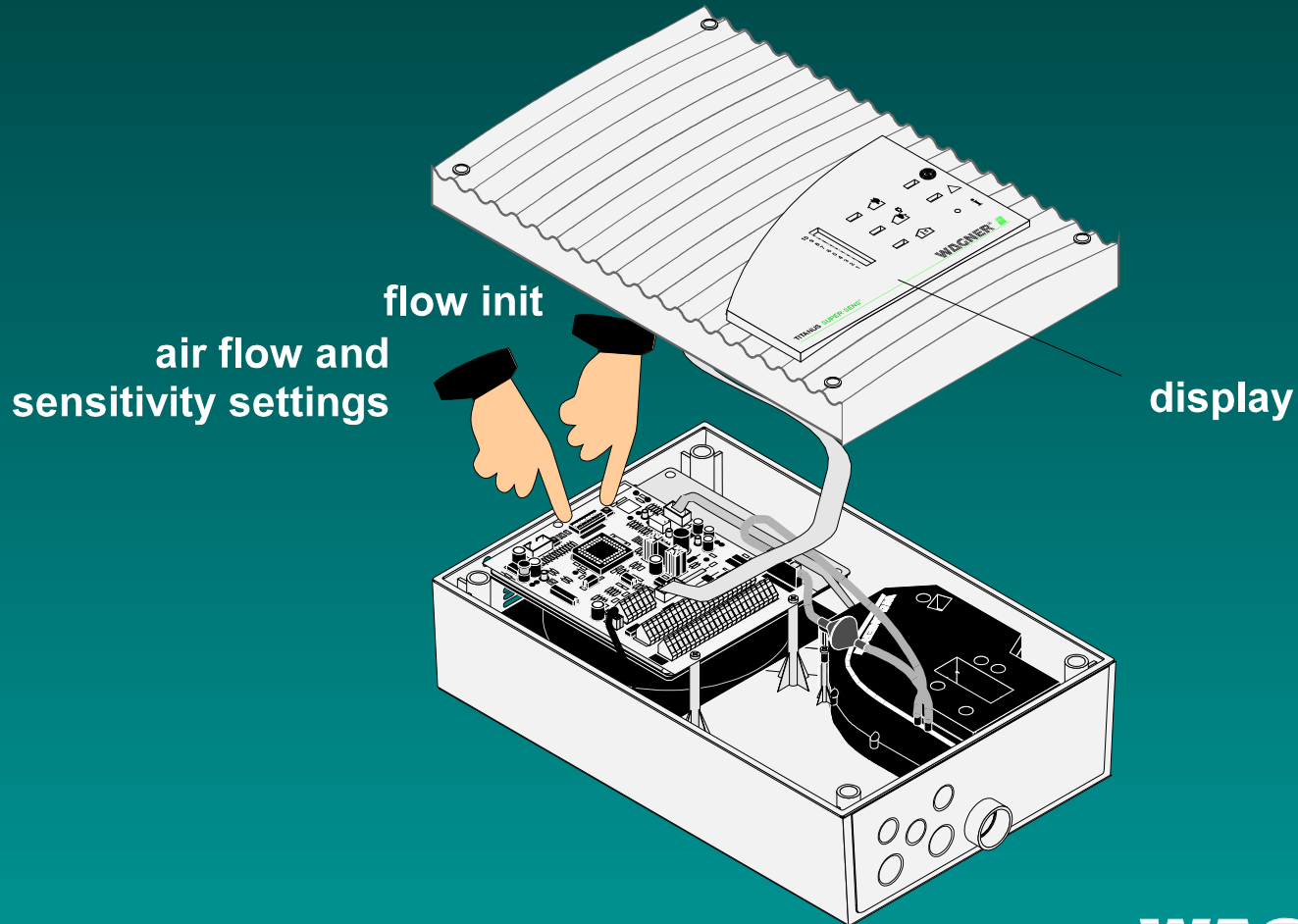
TITANUS SUPER-SENS®

Display



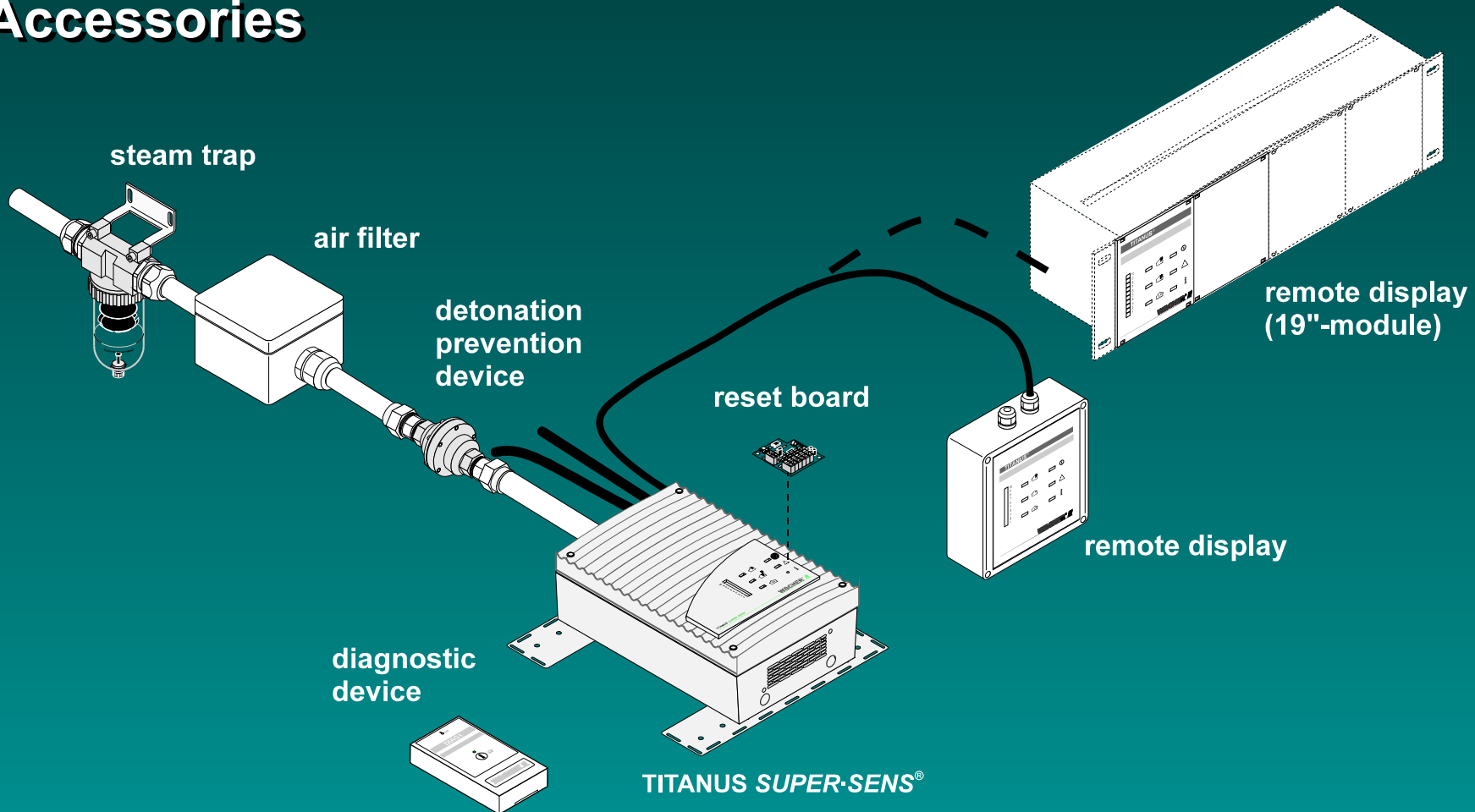
TITANUS SUPER-SENS®

Switches /Connectors



TITANUS SUPER-SENS®

Accessories



TITANUS SUPER-SENS®

Technical Data (extract)

pipe length	360 m (max) 120 m (according to VdS)
air sampling points max.	72
area monitored max.	2000 m ² 1440 m ² (according to VdS)
temperature range	-20° C up to +60° C
power supply	24V (14V up to 30V) DC
current consumption	245 mA (quiescent) 320 mA (Alarm - max.)

TITANUS SUPER-SENS®

Display Sensitivities

Sensitivity Level	Sensitivity
I	0.02% light obscuration/m
II	0.01% light obscuration/m
III	0.005% light obscuration/m
IV	0.0025% light obscuration/m

TITANUS SUPER-SENS®

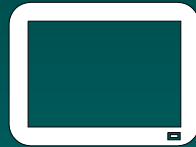
Network solution VisuLAN® T

Network solution with standard bus system
(Interbus)

- information and diagnostics tool
- diagnostics window for causes of faults
- diagnostics window with smoke level and air flow value
- protocol possibility and graphic print
- data export

TITANUS SUPER-SENS®

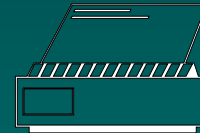
Network solution VisuLAN® T



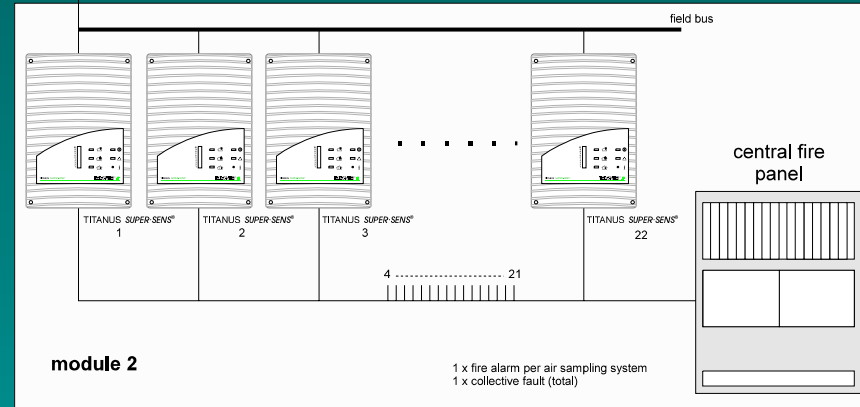
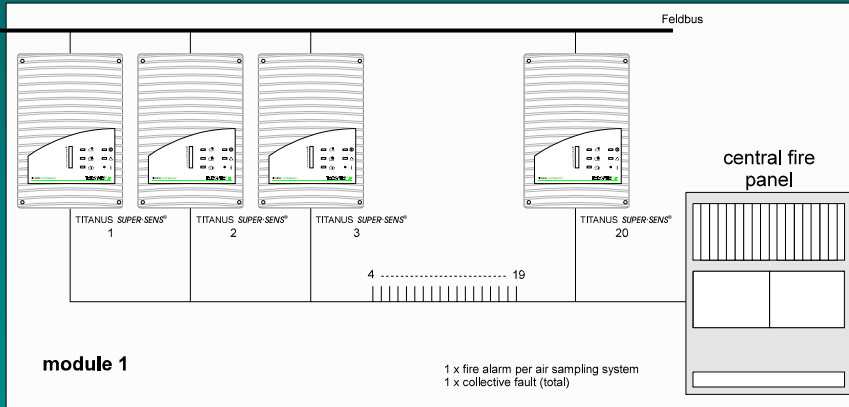
network central unit



monitoring-PC



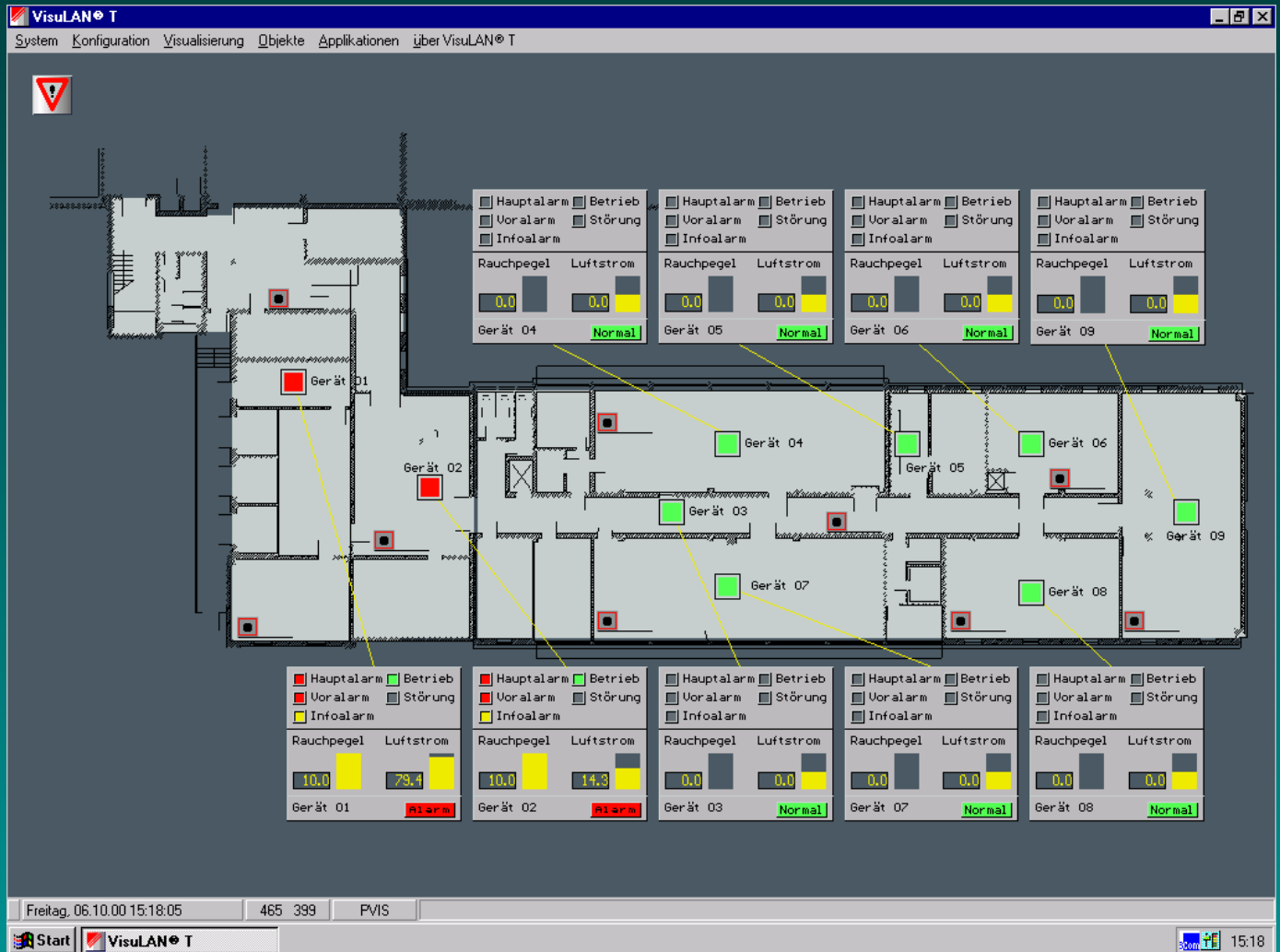
printer



TITANUS SUPER-SENS®

Network

Overall information with location and status



TITANUS SUPER-SENS®

Network

Status indication for several units at the same time

- In Operation
- Alarm Levels
- Airflow Level
- Smoke Level
- Fault

The screenshot displays the VisuLAN® T software interface. The main window shows a floor plan with several fire detector units (Gerät 01 to 08) marked with red squares. A detailed status window for 'Wagner TITANUS SUPER-SENS® 01' is open, showing the following data:

Parameter	Value	Unit
Rauchpegel	10.0	
Luftstrom	10.4	
Status	Hauptalarm (red house icon)	
Status	Voralarm (red house icon)	
Status	Infoalarm (yellow house icon)	
Status	Betrieb (green circle icon)	
Status	Störung (grey triangle icon)	
Einstellungen	Sensibilität	0,050 %/m
Einstellungen	Verzögerungszeit Alarm	60 s
Einstellungen	Verzögerungszeit Störung	15,0 min
Einstellungen	Störung / Infoalarm	speichernd
Einstellungen	Schwelle	mittel

Below the main status window, there are smaller status indicators for other units:

Unit	Rauchpegel	Luftstrom	Status
Gerät 01	10.0	10.4	Alarm
Gerät 02	10.0	15.4	Alarm
Gerät 03	0.0	0.0	Normal
Gerät 07	0.0	0.0	Normal
Gerät 08	0.0	0.0	Normal

The interface also includes a legend for alarm levels (Hauptalarm, Voralarm, Infoalarm, Betrieb, Störung) and a taskbar at the bottom showing the system date and time (Montag, 09.10.00 09:32:33).

TITANUS SUPER-SENS®

Network

Information and Diagnostic Tool

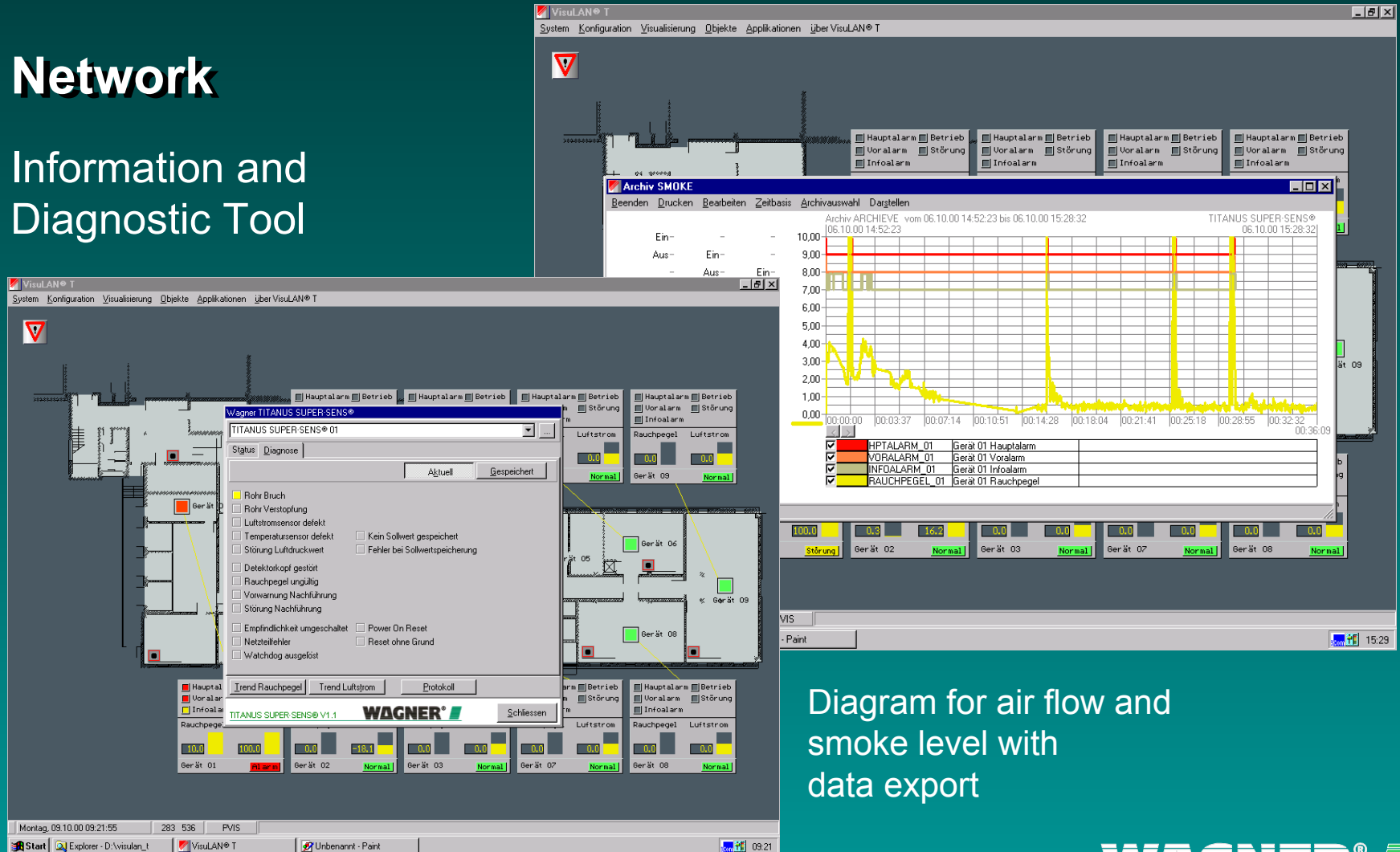
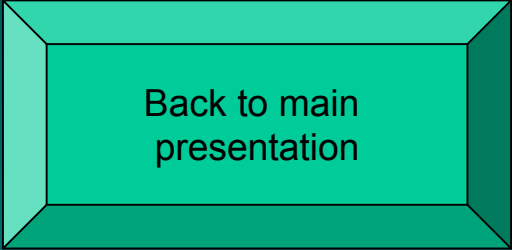


Diagram for air flow and smoke level with data export



Back to main
presentation